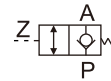


Pilot no-return valve

PCV series



Ordering code

PCV 06 □ T



① Model	② Port size	③ Pilot port type			④ Thread type
PCV: Pilot no-return valve	06: 1/8" 08: 1/4" 10: 3/8" 15: 1/2"	Pilot port type	Pilot port size	Inlet/outlet port size	T: NPT
		Blank: Female thread	M5X0.8	1/8"	
			1/8"	1/4"	
			1/4"	3/8", 1/2"	

Specification

Model	PCV06	PCV08	PCV10	PCV15
Fluid	Air (to be filtered by 40μm filter element)			
Operating pressure range	22~145psi(0.15~1.0MPa)			
Proof pressure	215psi(1.5MPa)			
Temperature	-20~70(°C)			
Operating frequency	60(Cycle/minute)		40(Cycle/minute)	
Port size [Note1]	1/8"	1/4"	3/8"	1/2"
Pilot port size	M5X0.8	1/8"	1/4"	1/4"
Weight(g)	53.2	94.8	142.8	189.6

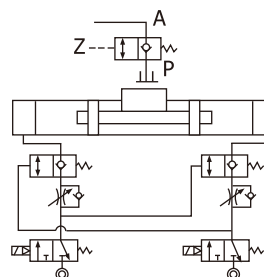
[Note1] NPT thread is available.

Product feature

1. Can be used for safety loop of pressure holding.
2. Can make cylinder momentary stop, accurate orientation.
3. Can be used special loop.
4. Fitting joint type is used for pilot port, which saved space and improve efficiency of installation.

Typical application

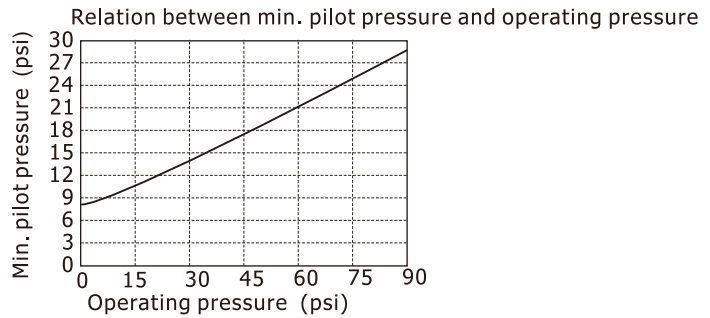
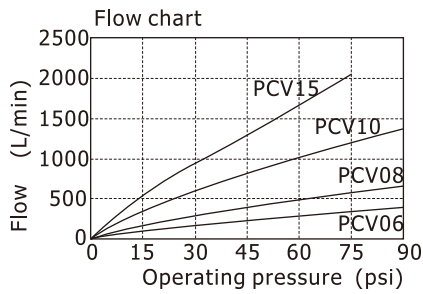
Accurate orientation



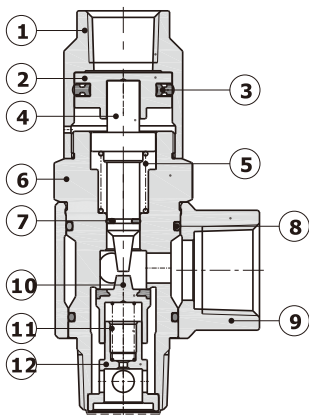
Pilot no-return valve

PCV series

Flow chart, Relation between min. pilot pressure and operating pressure

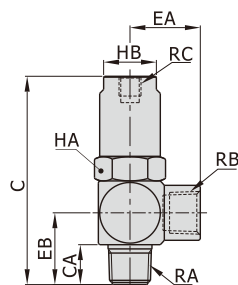


Inner structure



No.	Item
1	Pilot body
2	Piston
3	Gasket
4	Spool
5	Spring
6	Body
7	Spool O-ring
8	O-ring
9	Conversion fitting
10	Plunger
11	Spring
12	Base

Dimensions



[Unit: mm]

Model\Item	C	CA	EA	EB	HA	HB	RA	RB	RC
PCV06	48.5	7.5	16	16.5	14	12	1/8"	1/8"	M5X0.8
PCV08	59	10	20.3	21	17	14	1/4"	1/4"	1/8"
PCV10	74.5	11	25	26	22	17	3/8"	3/8"	1/4"
PCV15	79.5	14	28	29.5	24	19	1/2"	1/2"	1/4"